

Museum Towers Newsletter

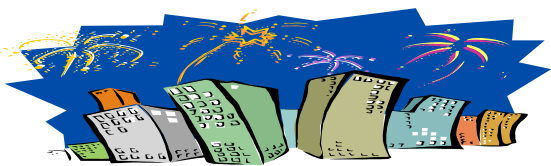
🍎 Holiday Season Issue, December, 2005 🍎

Museum Towers will be distributing a quarterly newsletter to let residents know what is going on in the building.

Over the span of 2005, steps have been taken to update the building in both function and aesthetics. We will continue in these actions in 2006 and have already put in place plans for additional improvements in order for Museum Towers to remain an enjoyable building to live in.

Rooftop: Although the rooftop was closed for repairs, it has now been reopened in time for summer. The balustrades have undergone work and further maintenance will be carried out in the new year to ensure that the area keeps in good condition for a long life.

The rooftop will be opened on new years eve for those wishing to see the fireworks. Extra security will be onsite on the day to ensure that guests are guided in the right direction and aid in supervising safety for the rooftop. In the interests of heightened safety, anyone on the rooftop should refrain from leaning on the balustrades and all care should be taken with regards to supervising children. Please remember that no-one should run on the roof, play ball games and items should be kept from blowing off the edge. Access to the rooftop is gained by going to level 35 and walking up one flight of stairs. The doors will be opened for access on the 31st December from around 7pm.



Level 7 BBQ Area: In addition to the rooftop BBQ area, there is a medium sized area on level 7. There are seating and bathroom facilities with a sensor light to aid with night time BBQ's. This area is well sheltered from the wind. Bookings should be made at the front desk.

Level 8 Facilities: An emergency stop button has been installed on the spa for the safety of those using it. Once the button is pushed, it will need to

be twisted slightly until it 'pops' back out before the spa can be reactivated for use.

The couches on level 8 seating area have been newly covered.

There is also a new semi-commercial treadmill in the gym and the gym equipment has been recently serviced in time for the holiday period.

If anyone requires pool cues for use of the pool table or keys to access the squash court, please come to see staff at the front desk. To avoid disappointment, book at the front desk for games with friends and family.

The spa is heated to vary between 32-36 degrees Celsius and the pool ranges between a warm 28- 32 degrees.

Lift Modernisation: At the recent Annual General Meeting, approval was given for modernisation of the lifts. Work will commence on the lifts in early 2005 by *Liftronic*.

For this modernisation, one lift will be worked on at a time whilst the other two remain running. We appreciate your patience while these updates are being made. Please refrain from pressing the 'call' buttons repeatedly as this may cause unnecessary problems. Some extra time may be needed to get up and down within the building.

The work will take around 4 months yet the lifts will work in a much speedier, safer and efficient way once the work is complete.

Visitors Parking: The basement car park is accessible for Visitors of residents. There is a limit of one visiting car per unit and these cars can stay for up to 2 full days in any 7 day period (per unit). Spots unfortunately cannot be reserved so are based on availability only. See the front desk staff for access when your visitor arrives to receive an access ticket.

Christmas:

The holiday season is upon us again! We would like to take this opportunity to wish you all a Merry Christmas and Happy New Year!

Please take care, especially if you are travelling and we hope that you enjoy time with friends and family.